

Afmitech provides built-in wastewater treatment system for sustainable house boat



Project

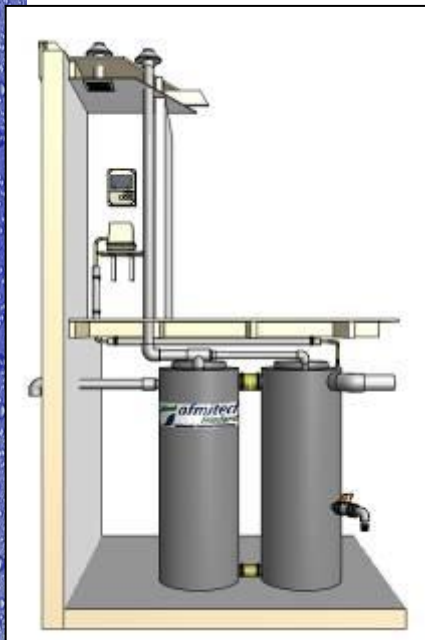
MEA consultancy bureau is a consultancy bureau that has specialized itself in sustainable developments such as energy neutral constructions, wind energy, solar power and geothermal power. At the present MEA consultancy bureau is developing a house boat with the purpose of demonstrating how sustainable techniques can be used in house boats.

Location

The house boat will be used for tours but will also offer the possibility to experience the life in a sustainable setting for those who are interested. For these purposes, the house boat can be moored at several places.

Technique

Together with MEA we have chosen to use a Bever Combi Compact Built-in with a capacity for 1 to 2 persons. To implement a wastewater treatment system in a boat not only requires experience in producing wastewater treatment systems, but also experience in placing these systems in non-standard situations. Because Afmitech produces and develops it's own products, this wastewater system will be fully adjusted to its use in this situation.



For more information on this project please have a look at the following sites:

<http://www.afmitech.com/products/bever-combi-compact-built-in>

<http://www.mea-adviesburo.nl/index.htm>

